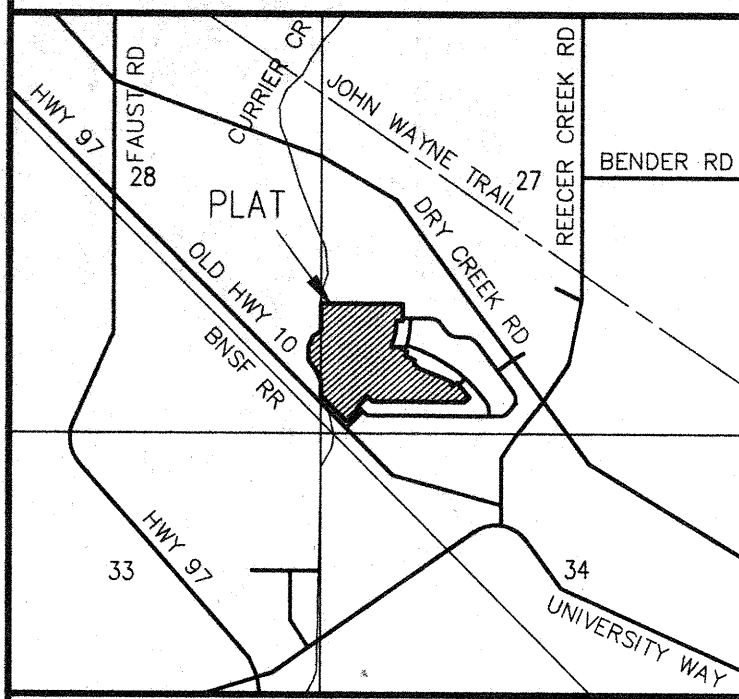
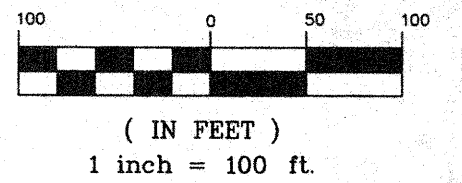


VICINITY MAP



CURRIER CREEK ESTATES - DIV. 3 & 4
 PART OF SECTIONS 27 & 28, T. 18 N., R. 18 E., W.M.
 KITTITAS COUNTY, WASHINGTON
 - PRELIMINARY PLAT -



OWNER:
 CASCADE VIEW, INC.
 620 SE EVERETT MALL WAY
 SUITE 360
 EVERETT, WA 98208

TOTAL ACREAGE: 24.28 ACRES
 NO. OF LOTS: 88
 ZONE: RESIDENTIAL
 ASSESSOR'S NO. 18-18-27030-0036
 & 18-18-27030-0037

SOURCE OF WATER: CITY OF ELLENSBURG
 SEWER SYSTEM: CITY OF ELLENSBURG
 DRAINAGE: CITY OF ELLENSBURG
 ACCESS: DEDICATED PUBLIC STREETS

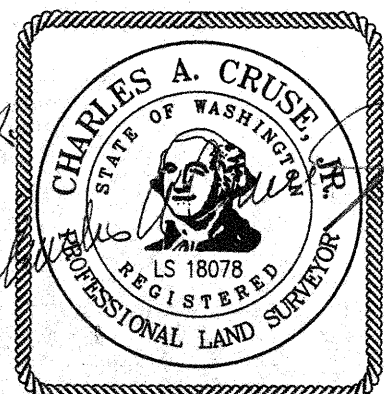
LEGAL DESCRIPTION

PARCELS 3 AND 4 OF THAT CERTAIN SURVEY AS RECORDED MARCH 10, 2004, IN BOOK 30 OF SURVEYS, PAGE 12, UNDER AUDITOR'S FILE NO. 200403100029, RECORDS OF KITTITAS COUNTY, WASHINGTON; BEING A PORTION OF THE SOUTH HALF OF THE SOUTHWEST QUARTER OF SECTION 27, TOWNSHIP 18 NORTH, RANGE 18 EAST, W.M., AND PORTION OF THE SOUTHEAST QUARTER OF THE SOUTHEAST QUARTER OF SECTION 28, TOWNSHIP 18 NORTH, RANGE 18 EAST, W.M., IN THE COUNTY OF KITTITAS, STATE OF WASHINGTON.

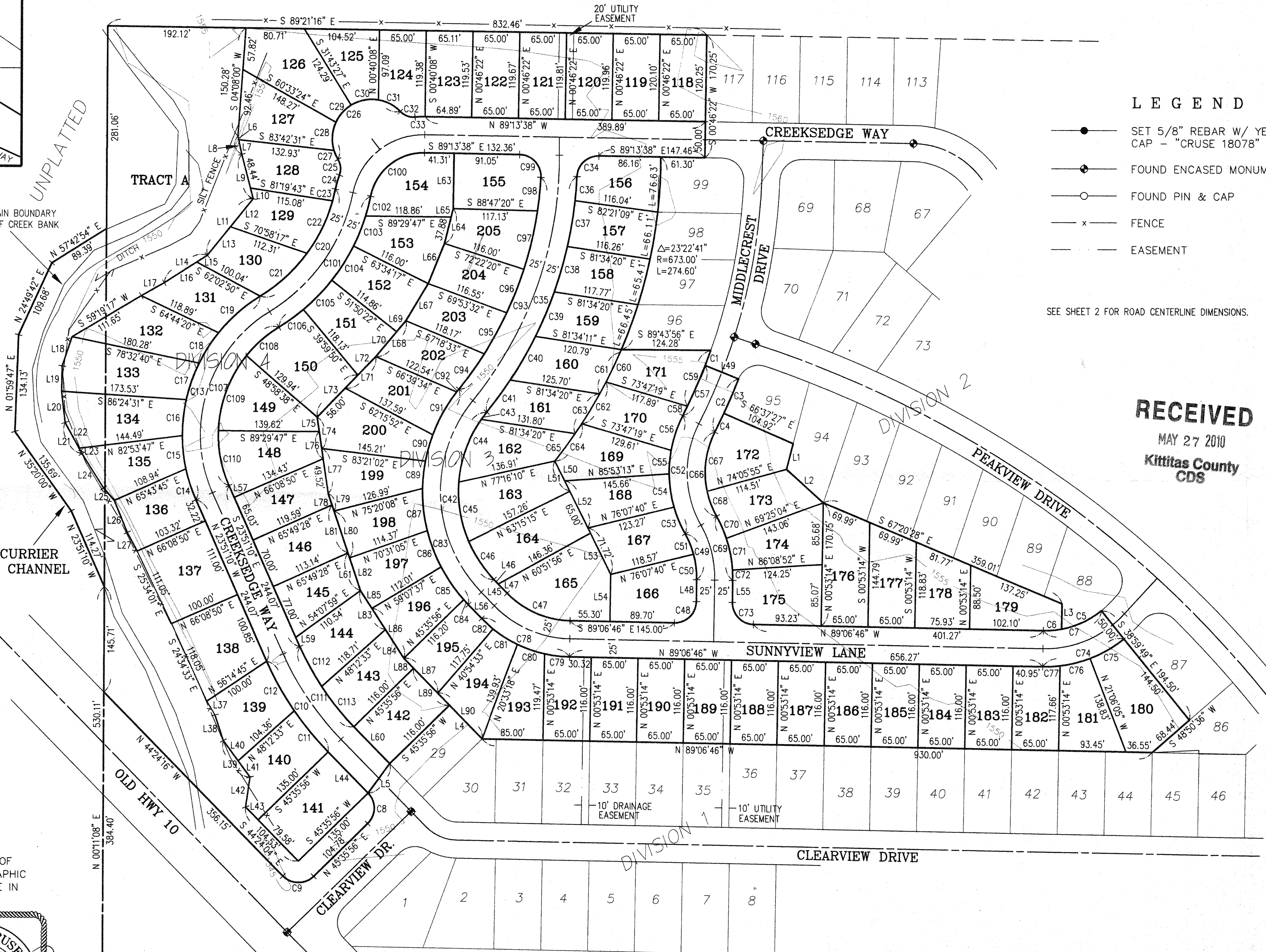
SURVEYOR'S CERTIFICATE

THIS MAP AND LOT LAYOUT IS A DEPICTION OF THE PROPERTY DESCRIBED HEREON. TOPOGRAPHIC INFORMATION IS BASED ON FIELD WORK DONE IN APRIL OF 2010.

Charles A. Cruse, Jr.
 CHARLES A. CRUSE, JR.
 Professional Land Surveyor
 License No. 18078



5-27-10
 DATE

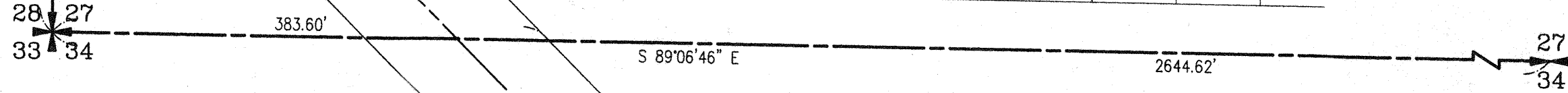


LEGEND

- SET 5/8" REBAR W/ YELLOW CAP - "CRUSE 18078"
- FOUND ENCASED MONUMENT
- FOUND PIN & CAP
- x FENCE
- EASEMENT

SEE SHEET 2 FOR ROAD CENTERLINE DIMENSIONS.

RECEIVED
 MAY 27 2010
 Kittitas County
 CDS



CRUSE & ASSOCIATES
 PROFESSIONAL LAND SURVEYORS
 217 E. Fourth St. P.O. Box 959
 Ellensburg, WA 98926 (509) 962-8242

CURRIER CREEK ESTATES - DIV 3 & 4

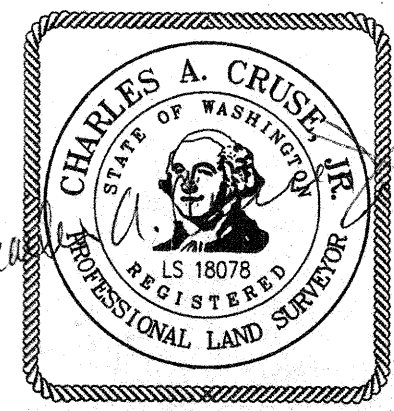
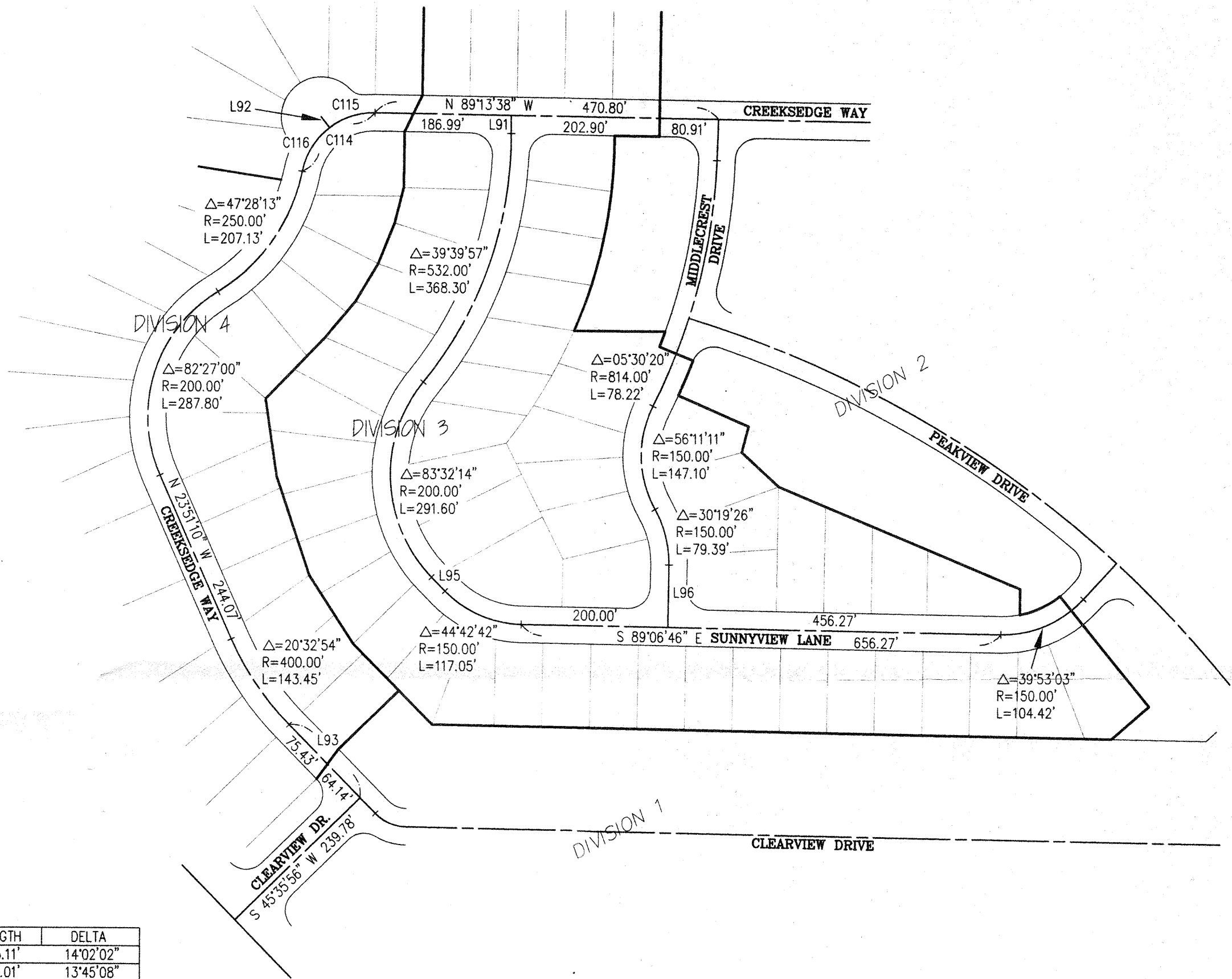
CURRIER CREEK ESTATES – DIV. 3 & 4
PART OF SECTIONS 27 & 28, T. 18 N., R. 18 E., W.M.
KITTITAS COUNTY, WASHINGTON
– PRELIMINARY PLAT –



LINE	DIRECTION	DISTANCE
L1	S 14°33'07" W	36.76'
L2	S 47°23'39" E	68.86'
L3	S 00°53'14" W	34.99'
L4	N 44°24'04" W	65.00'
L5	S 36°11'17" W	50.68'
L6	S 12°13'45" E	5.27'
L7	S 12°13'45" E	20.61'
L8	S 12°13'45" E	25.88'
L9	S 14°36'24" E	63.57'
L10	S 14°36'24" E	15.13'
L11	S 38°51'36" W	101.10'
L12	S 38°51'36" W	50.09'
L13	S 38°51'36" W	51.01'
L14	S 57°26'11" W	70.71'
L15	S 57°26'11" W	17.41'
L16	S 57°26'11" W	53.29'
L17	S 60°29'06" W	36.79'
L18	S 18°38'23" W	42.54'
L19	S 01°08'41" W	35.32'
L20	S 06°34'23" E	43.45'
L21	S 28°46'35" E	49.15'
L22	S 28°46'35" E	40.53'
L23	S 28°46'35" E	8.62'
L24	S 31°55'16" E	56.66'
L25	S 40°49'00" E	22.95'
L26	S 22°06'31" E	48.07'
L27	S 28°36'03" E	29.10'
L28	S 30°37'57" E	22.28'
L29	S 18°19'58" E	37.40'
L30	S 36°16'26" E	62.62'
L31	S 36°16'26" E	34.79'
L32	S 36°16'26" E	27.84'
L33	S 08°04'39" W	41.82'
L34	S 44°24'04" E	24.95'
L35	N 44°24'04" W	79.58'
L36	S 44°24'04" E	26.47'
L37	N 44°24'04" W	8.66'
L38	S 44°24'04" E	17.81'
L39	N 00°53'14" E	30.35'
L40	S 68°21'29" E	50.00'
L41	S 26°21'51" E	30.98'
L42	S 26°21'51" E	47.24'
L43	S 26°21'51" E	73.26'
L44	S 26°21'51" E	63.72'
L45	S 00°53'14" W	65.27'
L46	S 00°53'14" W	30.35'
L47	N 44°24'04" W	26.47'
L48	S 23°51'10" E	17.95'
L49	S 23°51'10" E	14.08'
L50	S 44°24'04" E	71.29'
L51	S 18°35'48" E	54.86'
L52	S 00°46'22" W	76.78'
L53	S 13°57'42" W	50.00'
L54	N 13°57'42" E	12.12'
L55	S 22°01'41" W	60.00'
L56	S 30°49'44" W	60.00'
L57	S 39°58'08" W	65.00'
L58	N 39°58'08" E	20.00'
L59	S 39°58'08" W	45.00'
L60	S 44°01'49" W	61.03'
L61	S 44°01'49" W	35.89'
L62	S 44°01'49" W	81.14'
L63	N 08°15'33" W	43.73'
L64	S 08°15'33" E	20.12'
L65	S 08°15'33" E	37.89'
L66	N 08°15'33" W	63.80'
L67	N 18°35'48" W	16.73'
L68	N 18°35'48" W	25.75'
L69	S 18°35'48" E	68.56'
L70	N 18°35'48" W	70.33'
L71	S 18°35'48" E	47.61'
L72	S 32°56'01" E	64.17'
L73	S 32°56'01" E	47.08'
L74	S 32°56'01" E	29.18'
L75	S 32°56'01" E	82.07'
L76	N 44°24'04" W	67.35'
L77	S 44°24'04" E	19.38'
L78	S 44°24'04" E	71.29'
L79	S 44°24'04" E	86.33'
L80	S 00°31'48" E	25.01'
L81	S 37°34'39" E	18.32'
L82	S 44°24'04" E	139.58'
L83	S 44°24'04" E	26.47'
L84	S 00°53'14" W	85.35'

CURVE	RADIUS	LENGTH	DELTA
C1	789.00'	22.27'	01°37'02"
C2	839.00'	80.45'	05°29'37"
C3	839.00'	51.69'	03°31'47"
C4	839.00'	28.76'	01°57'51"
C5	125.00'	61.48'	28°10'42"
C6	125.00'	25.54'	11°42'20"
C7	125.00'	87.01'	39°53'03"
C8	30.00'	47.12'	90°00'00"
C9	30.00'	47.12'	89°59'48"
C10	425.00'	152.42'	20°32'54"
C11	425.00'	73.59'	09°55'16"
C12	425.00'	78.83'	10°37'38"
C13	225.00'	323.78'	82°27'00"
C14	225.00'	45.95'	11°42'00"
C15	225.00'	46.45'	11°49'45"
C16	225.00'	50.33'	12°49'04"
C17	225.00'	53.84'	13°42'39"
C18	225.00'	49.98'	12°43'42"
C19	225.00'	77.22'	19°39'51"
C20	225.00'	186.42'	47°28'13"
C21	225.00'	88.21'	22°27'49"
C22	225.00'	81.40'	20°43'41"
C23	225.00'	16.80'	04°16'43"
C24	125.00'	20.26'	09°17'16"
C25	25.00'	22.52'	51°37'06"
C26	55.00'	160.55'	167°15'09"
C27	55.00'	13.51'	14°04'39"
C28	55.00'	40.01'	41°41'02"
C29	55.00'	32.37'	33°43'06"
C30	55.00'	39.60'	41°15'02"
C31	55.00'	35.06'	36°31'21"
C32	25.00'	22.52'	51°37'06"
C33	125.00'	13.84'	06°20'32"
C34	30.00'	46.21'	88°15'07"
C35	557.00'	355.95'	36°36'55"
C36	557.00'	33.62'	03°27'31"
C37	557.00'	64.54'	06°38'20"
C38	557.00'	65.61'	06°44'56"
C39	557.00'	67.15'	06°54'25"
C40	557.00'	69.88'	07°11'17"
C41	557.00'	55.16'	05°40'25"
C42	175.00'	255.15'	83°32'14"
C43	175.00'	12.51'	04°05'44"
C44	175.00'	93.99'	30°46'21"
C45	175.00'	84.95'	27°48'49"
C46	175.00'	63.70'	20°51'19"
C47	125.00'	97.55'	44°42'42"
C48	30.00'	47.12'	90°00'00"
C49	125.00'	66.16'	30°19'27"
C50	125.00'	35.61'	16°19'28"
C51	125.00'	30.54'	13°59'59"
C52	175.00'	171.61'	56°11'11"
C53	175.00'	40.48'	13°15'10"
C54	175.00'	47.19'	15°26'56"
C55	175.00'	33.05'	10°49'09"
C56	175.00'	50.90'	16°39'55"
C57	789.00'	75.99'	05°31'05"
C58	789.00'	14.54'	01°03'20"
C59	789.00'	83.72'	06°04'47"
C60	673.00'	49.64'	04°13'34"
C61	673.00'	68.21'	05°48'27"
C62	673.00'	67.01'	05°42'19"
C63	673.00'	65.03'	05°32'09"
C64	673.00'	63.81'	05°25'57"
C65	673.00'	47.23'	04°01'14"
C66	125.00'	122.58'	56°11'11"
C67	125.00'	84.99'	38°57'18"
C68	125.00'	37.59'	17°13'52"
C69	175.00'	92.62'	30°19'26"
C70	175.00'	33.46'	10°57'16"
C71	175.00'	44.68'	14°37'48"
C72	175.00'	14.48'	04°44'22"
C73	30.00'	47.12'	90°00'00"
C74	175.00'	121.82'	39°53'03"
C75	175.00'	54.66'	17°53'44"
C76	175.00'	43.03'	14°05'19"
C77	175.00'	24.13'	07°53'59"
C78	175.00'	136.56'	44°42'42"
C79	175.00'	34.91'	11°25'47"
C80	175.00'	39.94'	13°04'30"
C81	175.00'	39.94'	13°04'30"
C82	175.00'	21.78'	07°07'54"
C83	225.00'	328.05'	83°32'14"
C84	225.00'	9.53'	02°25'35"

CURVE	RADIUS	LENGTH	DELTA
C85	225.00'	55.11'	14°02'02"
C86	225.00'	54.01'	13°45'08"
C87	225.00'	59.56'	15°09'57"
C88	225.00'	38.83'	09°53'20"
C89	225.00'	37.76'	09°37'00"
C90	225.00'	68.25'	17°22'47"
C91	225.00'	5.00'	01°16'24"
C92	507.00'	320.43'	36°12'43"
C93	507.00'	60.23'	06°48'25"
C94	507.00'	65.04'	07°21'02"
C95	507.00'	65.04'	07°21'02"
C96	507.00'	83.38'	09°25'21"
C97	507.00'	46.73'	05°16'52"
C98	30.00'	48.25'	92°09'05"
C99	75.00'	104.26'	79°38'45"
C100	275.00'	227.84'	47°28'13"
C101	275.00'	28.40'	05°55'02"
C102	275.00'	45.04'	09°23'04"
C103	275.00'	56.31'	11°43'55"
C104	275.00'	56.84'	11°50'33"
C105	275.00'	41.25'	08°35'40"
C106	175.00'	251.83'	82°27'00"
C107	175.00'	60.19'	19°42'27"
C108	175.00'	112.88'	36°57'26"
C109	175.00'	78.76'	25°47'07"
C110	375.00'	134.49'	20°32'54"
C111	375.00'	63.13'	09°38'45"
C112	375.00'	71.36'	10°54'09"
C113	100.00'	139.01'	79°38'45"
C114	100.00'	66.93'	38°21'01"
C115	100.00'	72.07'	41°17'45"



CRUSE & ASSOCIATES
PROFESSIONAL LAND SURVEYORS
 217 E. Fourth St. P.O. Box 959
 Ellensburg, WA 98926 (509) 962-8242